



Joint Support and Enabling Command

Setting the scene



POLAD JSEC Dr. Sergei Boeke

JSEC's Mission



- Prepares the conditions for **Enablement** and
- coordinates **Reinforcement by Forces** and **Sustainment**
- in order to contribute to the Alliance's ability to **project and sustain combat power** into, across and from the AOR.

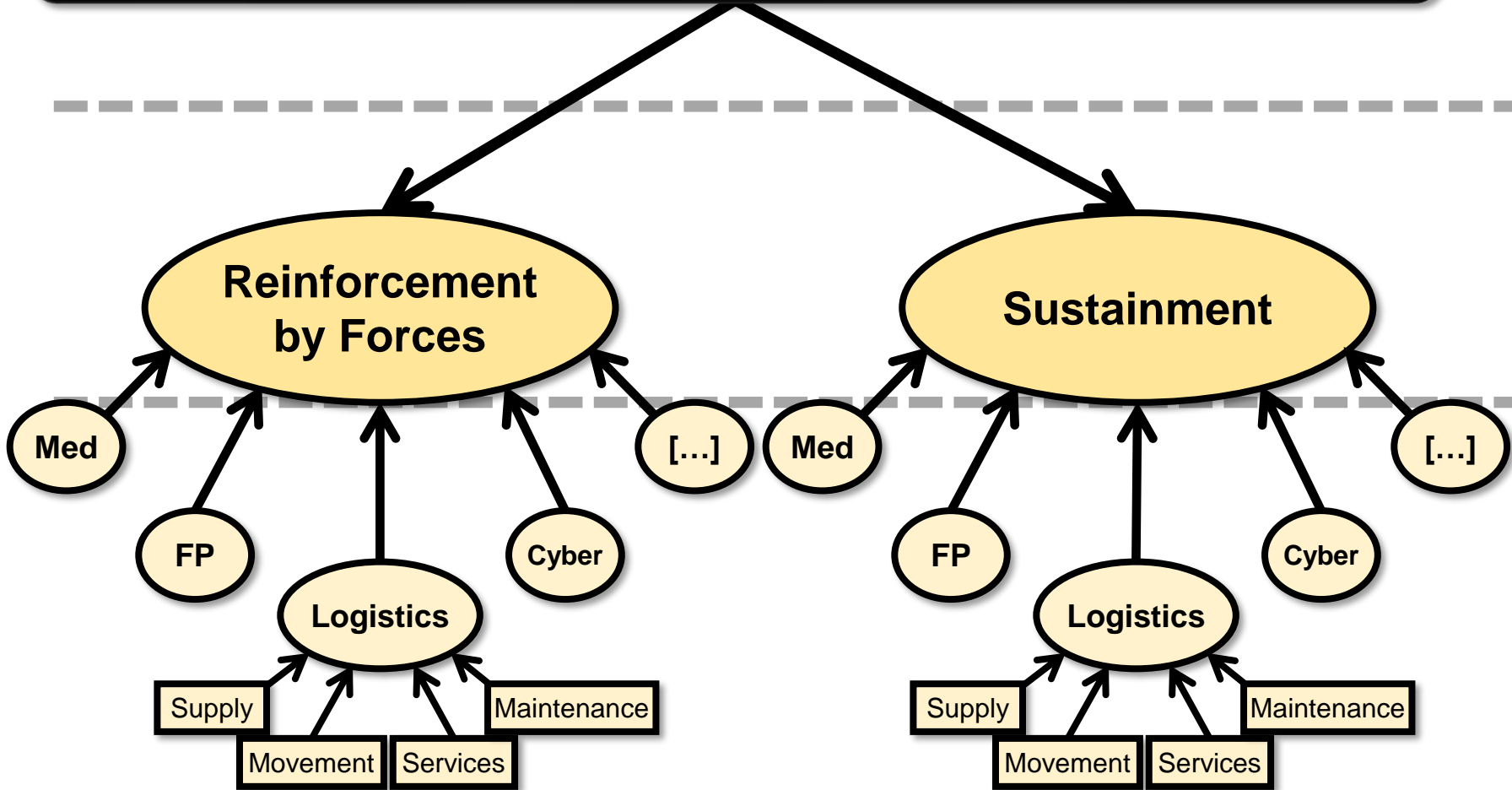


9.000 km

3.500 km

Enablement – Reinforcement - Sustainment

Enablement

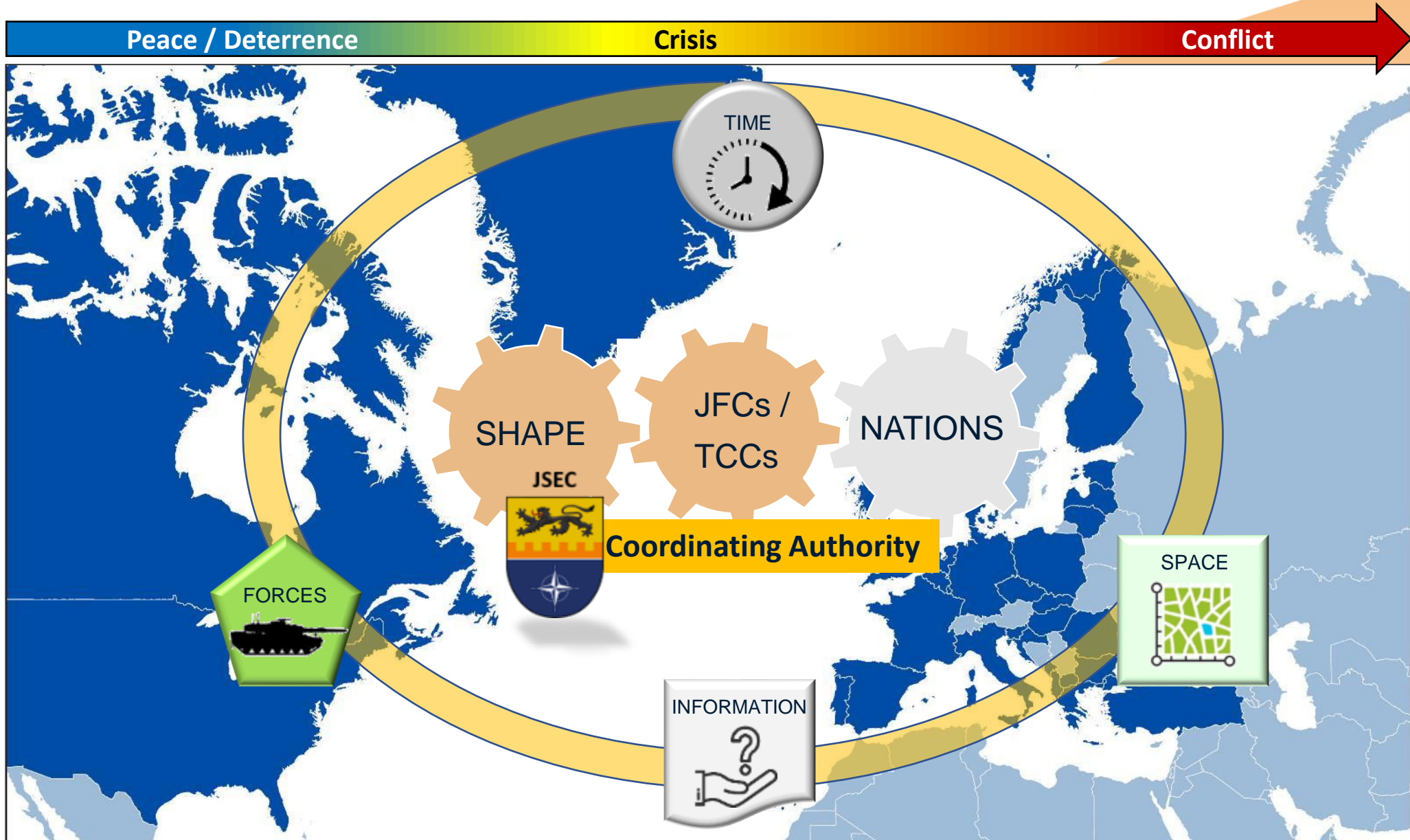


Activities to set a condition for ...

Strategic/Operational effect to be achieved by ...

Means supporting the achievement of effects

JSEC – Operational Challenges



JSEC's Operational Understanding

SACEUR's
Intent



Enabled Forces

- Enablers (CSS, CSO, flatbeds, etc.)
- Class I - V
- NDDP
- "Smart multinationality"
- Sustainment concept



Enabled Space



- Enabled RSN:
 - Border-xing regulations, Corridors, ISB, HNS, Resilience, ...
- Coordinated movement:
 - of Forces, Sustainment, Refugees, patients

Executability → Credibility

Disclaimer:
The points on the map are only illustrative

RSN -Physical and Functional Development

- ✓ **SACEUR Area of Responsibility-wide strategic construct,**
- ✓ **360 degrees perspective,**
- ✓ **sets conditions for timely and efficient RbyFo and Sustainment,**
- ✓ **By linking the *physical* and *functional* elements, in order to enable SACEUR's AOR.**

- Physical**
- Airports
 - Seaports
 - Railheads
 - Roads & Bridges & CSCs
 - Railheads & Railroads
 - Areas (MA, ISB, SA)
 - Hospitals
 - Force Protection Assets
 - Storage
 - Pipelines
 -

- Functional**
- Border Regulations
 - Infrastructure Alignment
 - Information Exchange
 - Asset Coordination
 - HNS Agreements
 - Force Protection
 - Movement Tracking
 -

- Sea Lane
- Major Road
- - - Flight Route
- - - Rail Line

